



## RON 3050 CW - Crane Scale with Large 2"/50mm Display

RON 3050 Crane Scale (crane weigher) is an industrial hanging scale, available with either a single or double back-to-back displays.

The Large-scale LCD display can be read at a considerable distance, even in sunlight thus ensuring the users safety and comfort.

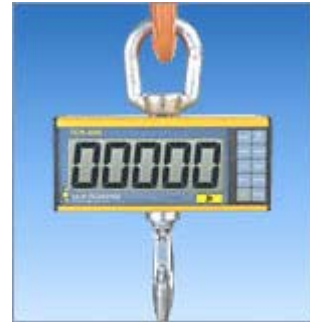
The robust enclosure of the digital load cell is made of extruded aluminum. Absolutely no castings in the unit.

The dimensions of this hanging scale ensure minimum loss of headroom.

All crane weighers are factory-tested and supplied with a test certificate, including a fully traceable calibration chart.

2000 hour battery life - applicable to all RON crane scale, dynamometer and load cell series and load cells with built-in amplifier.

*All RON crane scales and dynamometers are factory-tested and supplied with a test certificate, including a fully traceable calibration chart.*



**Interested in this product?**  
[CONTACT US](#)

### Specifications

**Safety Factor:** Designed to 5:1, for the load cell and the lifting eye. Average straightening load of the hook is at least 4 times the capacity.

**Proof Load:** Each system proof-loaded to 200% of capacity (certified) up to a test force of 400t.

**Accuracy:**  $\pm 0.1\%$  of full range.

Durability Robust, extruded aluminum housing, iridized and polyurethane coated.

**Display:** 5 digit, 2" (50mm) liquid crystal display and annunciator; two-level overload state, max.

value (peak hold), low battery, tare state (gross or net), measuring units, sleep state, charge, and programming instructions. Standard number of measurements per second: 1.

**Functions:** Zero. Tare. Low battery warning. Max. (peak hold). Two-level overload visual alarms. User calibration. Sleep mode after 60 sec. in zero value, awakes automatically when loaded.

**Units:** available in the following measurement readings: metric tons, short tons (2000 lbs), kgs, lbs, newtons, deca newtons, k. newtons.

**Load Cell Material:** Made of high-strength, aerospace quality, alloy steel, polyurethane coated.

**Power:** 3 x AA ("finger") 1.5 Volt Alkaline disposable batteries. Batteries rated 3AH will function for at least 2000 hours (at last three months of continuous working). Occasional use will extend the life of the batteries up to several years. Adding certain options will shorten the life of the batteries. All settings retained at power off.

**Calibration:** User calibration. Initial factory calibration, fully traceable (certified).

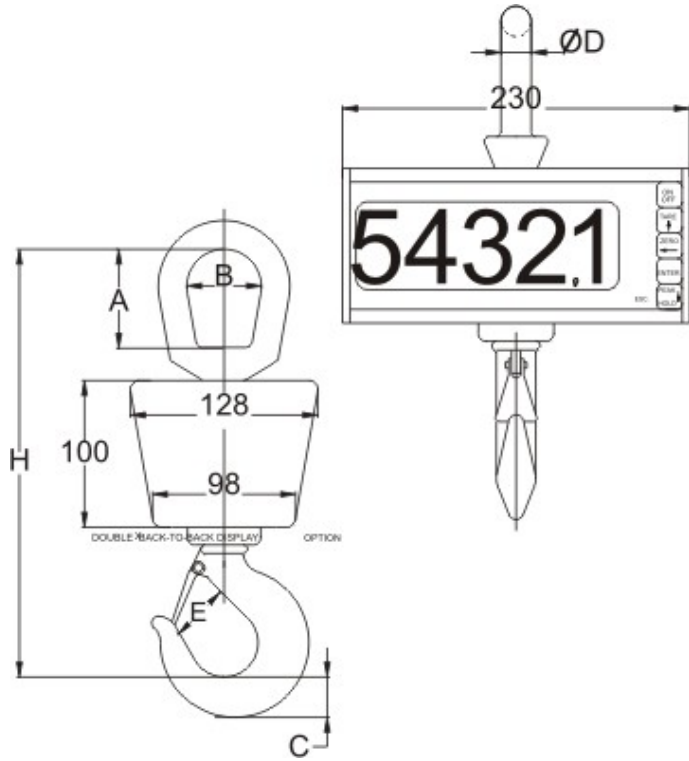
**Temperature Range:**  $-15^{\circ}\text{F}$  to  $+175^{\circ}\text{F}$  ( $-25^{\circ}\text{C}$  to  $+80^{\circ}\text{C}$ ).

**Environmental:** Weather proof, NEMA 4, IP65

### Options

- 1 or 2 user-adjustable set points
- Additional 2"/50mm LCD display with cable connection to indicator
- Additional 4"/100mm LED display with cable connection to indicator
- Analog output: 0 to 1V/0 to 2V/0 to 3V
- Analog output: 4 to 20 mA
- Baud rate, user-selectable
- Dampened (average) display for unstable load
- Data logger – up to 600 measurements
- Data logger – up to 3000 measurements
- Data logger – up to 6000 measurements
- Double, back-to-back displays
- Fatigue rated load cell
- Number of measurements per second: 2/3/4/5/6/7/8/20/30, factory set
- Real-time clock
- Rechargeable batteries with an external charger for charging the batteries inside the system
- RS-232 - continuous or on demand data output, user-selectable
- RS-485 - continuous or on demand data output, user-selectable
- Swirel hook (cap. 2.5t-10t)
- Totalizer
- Units, user-selectable
- Wireless (R.F.) data transmission

# RON 3050 CW



# This capacity is equipped with two-link chain between load cell and chain hook.

The company reserves the right to make changes without notice.

Cat no.	Cap.			Resolution		A		B		C		Ø D		E		H	
	tons	kgs	lbs	mm	inch	mm	inch	mm	inch	mm	inch	mm	inch	mm	inch		
CW-005#	0.5	0.2	0.5	51	2	38	1.5	31	1.25	13	0.5	25	1	330	13		
CW-01#	1	0.5	1	38	1.5	31	1.25	31	1.25	10	0.38	22	0.88	330	13		
CW-0125#	1.25	0.5	1	51	2	38	1.5	31	1.25	13	0.5	25	1	330	13		
CW-016#	1.6	1	2	51	2	38	1.5	31	1.25	13	0.5	25	1	330	13		
CW-025	2.5	1	2	67	2.63	51	2	29	1.13	19	0.75	29	1.13	290	11.5		
CW-03	3	1	2	67	2.63	51	2	29	1.13	19	0.75	29	1.13	290	11.5		
CW-032	3.2	2	5	67	2.63	51	2	29	1.13	19	0.75	29	1.13	290	11.5		
CW-05	5	2	5	89	3.5	63	2.5	37	1.5	25	1	37	1.44	330	13		
CW-10	10	5	10	102	4	78	3.13	57	2.25	32	1.25	57	2.25	480	19		

[Return to www.WeHaveScales.com Home Page](http://www.WeHaveScales.com)