

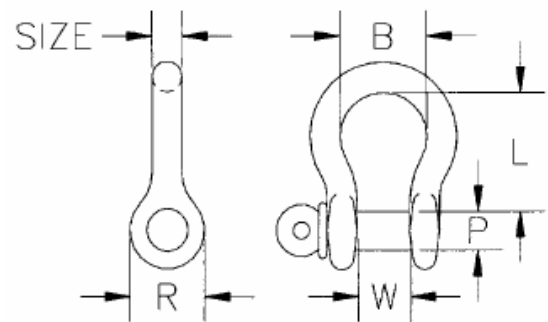


CM super strong anchor shackles

- These shackles have higher working load limits than specified by Federal Specifications.
- All shackle pins are forged from alloy steel, heat treated and tempered to give greater strength.
- All shackles are marked with size (inches and millimeters) and working load limit in tons.
- Ultimate strength equals 6 times working load limit. Proof load equals 2.2 times working load limit.
- All bolt, nut & cotter shackles have thread protected ends.
- When ordering, specify galvanized (G) or painted (P).
- Galvanized per ASTM A153.
- Painted shackles are orange.
- Ton = 2,000 lbs. (3/16" – 2"), 2,200 lbs. (2 1/2" – 3 1/2").
- Standard industry tolerances apply.
- Built-in Distortion Detectors (3/16" – 2").

Size (in.)	Working Load Limit (tons)	Product Code	Painted UPC 43927-	Galv. UPC 43927-
3/16	1/2	M645	--	40061
1/4	3/4	M646	40004	40062
5/16	1	M647	40008	40064
3/8	1-1/2	M648	40012	40066
7/16	2	M649	40016	40068
1/2	3	M650	40020	40070
5/8	4-1/2	M651	40023	40073
3/4	6-1/2	M652	40027	40074
7/8	8-1/2	M653	40031	40076
1	10	M654	40036	40077
1-1/8	12	M655	40039	40080
1-1/4	14	M656	40041	40082
1-3/8	17	M666	40044	40084
1-1/2	20	M657	40048	40087
1-5/8	24	M685	40052	40089
1-3/4	30	M677	40056	40091
2	35	M658	40060	40093

Size	P Dia of Pin	W Width between eyes	L Inside Length	B (min.) Inside Width at bow	R (max) Outside Dia of eye	Approx. weight Each (lbs.)
3/16	1/4	3/8	7/8	5/8	5/8	.06
1/4	5/16	15/32	1-1/8	3/4	7/8	.12
5/16	3/8	17/32	1-1/4	13/16	1	.20
3/8	7/16	21/32	1-7/16	15/16	1-1/8	.30
7/16	1/2	3/4	1-11/16	1-1/16	1-1/4	.50
1/2	5/8	13/16	1-7/8	1-3/16	1-3/8	.75
5/8	3/4	1 1/16	2-3/8	1 1/2	1 7/8	1.3
3/4	7/8	1-1/4	2-13/16	1-3/4	2-1/8	2.3
7/8	1	1 7/16	3-5/16	2	2 3/8	3.5
1	1-1/8	1-11/16	3-3/4	2-5/16	2-5/8	5.0
1-1/8	1-1/4	1-13/16	4-1/4	2-5/8	2-7/8	7.0
1-1/4	1-3/8	2-1/32	4-11/16	2-7/8	3-1/4	9.5
1-3/8	1-1/2	2-1/4	5-1/4	3-1/4	3-1/2	12.5
1-1/2	1-5/8	2-3/8	5-3/4	3-3/8	3-3/4	17.2
1-5/8	1-3/4	2-5/8	6-1/4	4	4-1/8	23.5
1-3/4	2	2-7/8	7	4-1/2	4-1/2	27.7
2	2-1/4	3-1/4	7-3/4	5-1/4	5-1/4	39.0



Interested in this product? [Contact Us](#)

[Return to www.WeHaveScales.com](http://www.WeHaveScales.com) Home Page

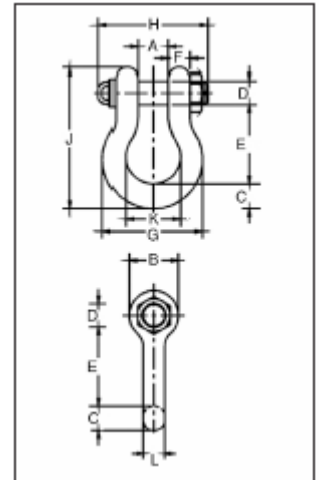
Crosby Alloy Bolt Type Shackles

G-2140 / S-2140 ALLOY BOLT TYPE ANCHOR SHACKLES



G-2140 meets the performance requirements of Federal Specification RR-C-271D, Type IVA, Grade B, Class 3, except for those provisions required of the contractor.

- Quenched and Tempered.
- Alloy bows, Alloy bolts.
- Forged Alloy Steel 30 thru 175 metric tons. Cast Alloy Steel 200 thru 400 metric tons.
- Working Load Limit is permanently shown on every shackle.
- All sizes are individually proof tested to 2.0 times the Working Load Limit.
- Pins are galvanized and painted red.
- Certification must be requested at time of order.
- Shackles are Quenched and Tempered and can meet DNV impact requirements of 42 joules at - 20 C.
- Crosby products meet or exceed all the requirements of ASME B30.26 including identification, ductility, design factor, proof load and temperature requirements. Importantly, Crosby products meet other critical performance requirements including fatigue life, impact properties and material traceability, not addressed by ASME B30.26.
- Shackles 200 metric tons and larger are provided as follows.
- Serialized Pin and Bow
- Material Certification (Chemical)
- Magnetic Particle Inspected



Nominal Shackle Size(in.)	Working Load Limit*(t)	G-2140 Galv.	S-2140 S.C.	Stock No.	Weight Each (lbs.)	A	B	C	D	E	F	G	H	J	K	L	Dimension (in.)	A
1 ½	30	1021110	1021129		20.8	2.38	3.63	1.62	1.66	5.75	1.39	6.88	7.73	10.00	3.88	1.53		.13
1 ¾	40	1021138	1021147		33.9	2.88	4.19	2.25	2.04	7.00	1.75	8.80	9.33	12.34	5.00	1.84		.13
2	55	1021156	1021165		52.0	3.25	4.81	2.40	2.30	7.75	2.00	10.15	10.41	13.68	5.75	2.08		.13
2 ½	85	1021174	1021183		96.0	4.12	5.81	3.12	2.71	10.50	2.62	12.75	13.58	17.70	7.25	2.71		.25
3	120	1021192	-		178.0	5.00	6.50	3.62	3.30	13.00	3.00	14.62	15.13	21.50	7.88	3.12		.25
3 ½	150	1021218	-		265.0	5.25	8.00	4.38	3.76	14.63	4.00	17.02	19.00	24.88	9.00	3.62		.25
4	175	1021236	-		338.0	5.50	9.00	4.56	4.25	14.50	3.75	18.00	19.75	25.68	10.00	4.00		.25
4 ¾**	200	1021414	-		450.0	7.25	10.50	6.00	4.75	15.69	3.88	21.00	20.59	29.25	11.00	4.50		.25
5**	250	1021432	-		600.0	8.50	12.00	6.50	5.00	20.06	3.88	24.50	22.06	35.00	13.00	4.50		.25
6**	300	1021450	-		775.0	8.38	12.00	6.75	6.00	19.56	6.43	25.00	24.44	35.25	13.00	5.00		.25
7**	400	1021478	-		1102.0	8.25	14.00	7.25	7.00	22.56	6.50	26.00	28.06	40.25	13.00	6.00		.25

* Note: Maximum Proof Load is 2.0 times the Working Load Limit. Minimum Ultimate Load is 4 times the Working Load Limit on 200 thru 400 metric Tons. For sizes 30 thru 175 metric Tons, Minimum Ultimate Load is 5.4 times the Working Load Limit.

** Cast Alloy Steel.

Furnished with Round Head Bolts, with welded handle.

Interested in this product? [Contact Us](#)

Return to www.WeHaveScales.com Home Page